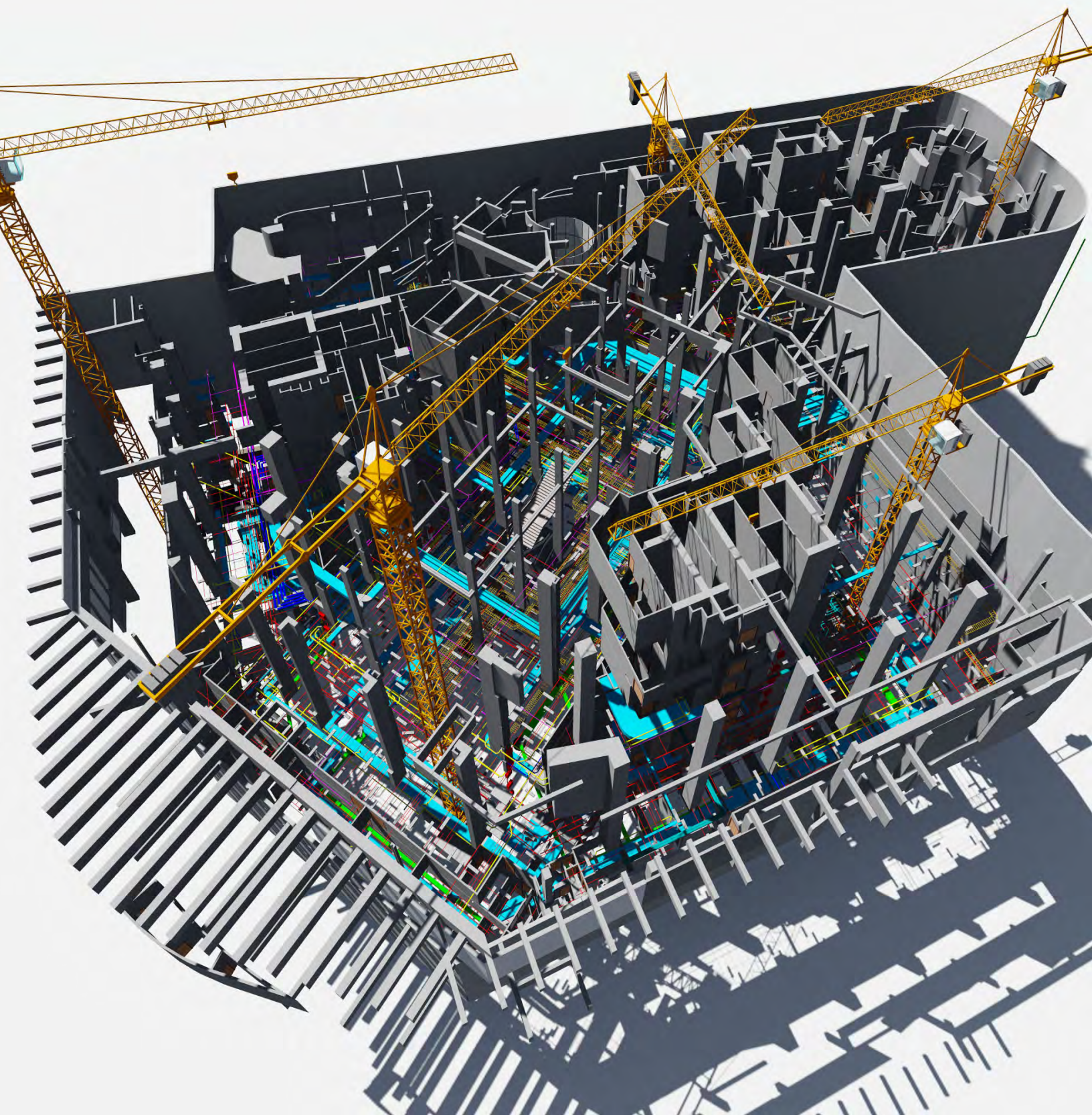


 **Intexa**
I N G E N I E R I A

OUR COMPANY



OUR COMPANY

ABOUT US

INTEXA S.A. was created in 2005 to offer, support and deliver integrated solutions to construction issues, from conception to construction and commissioning. Nowadays, we have converted to a relevant part of the market, delivering precise answers to the demands of numerous companies and investment groups in need of project management, operation and administration, as well as coordination of specialty projects, technical support, quality control of materials, and technical site inspection, in Chile and Colombia.

During our path, we have been delivering integrated solutions, on a professional way and constantly searching for new tools and practices that could allow us to manage efficiently the projects.

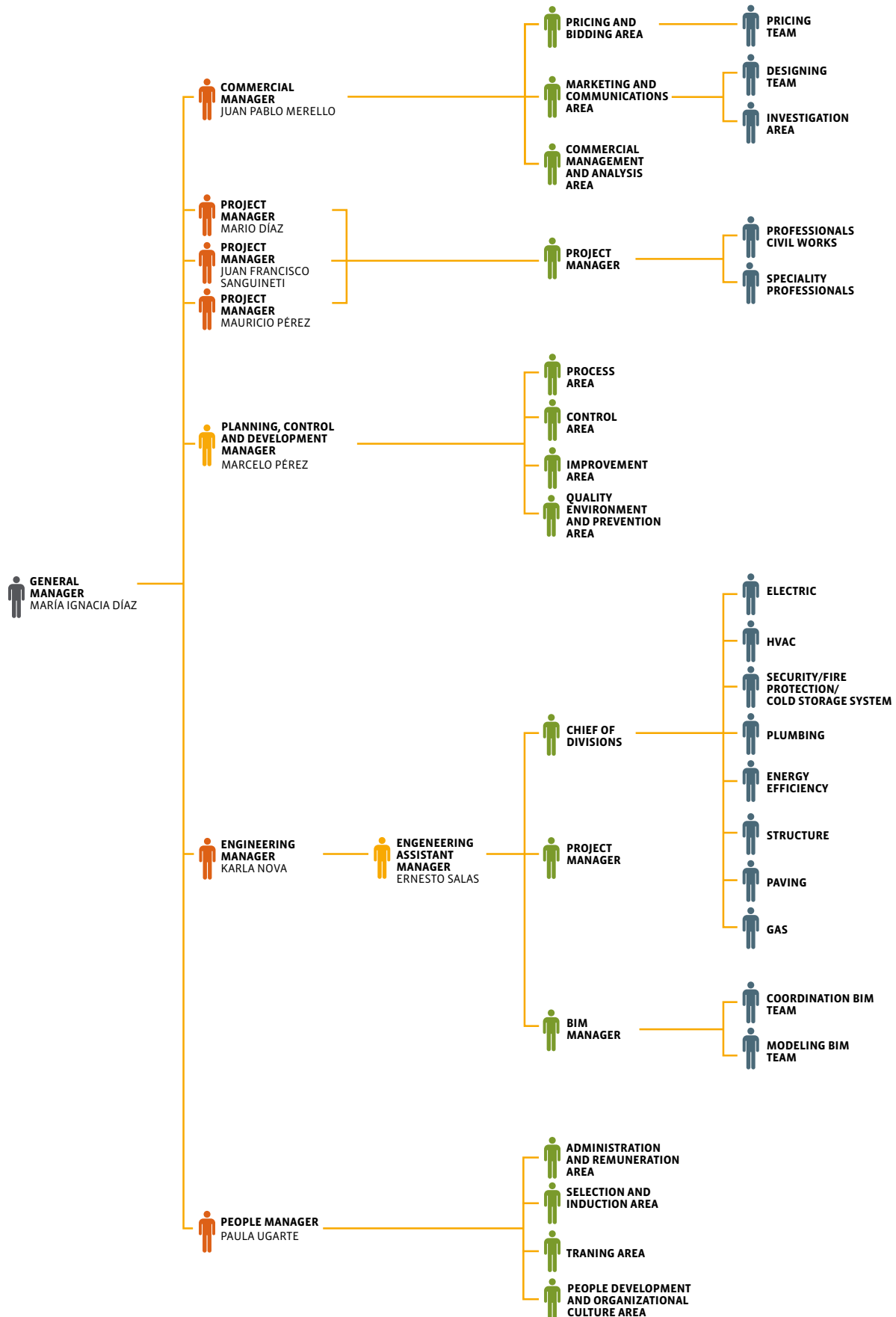
PURPOSE

To be recognized as the best company in managing integrated solutions in engineering and construction projects, generating rentability with integrity, quality, flexibility and innovation to the society.

VALUES

- Compromise
- Efficiency and Innovation
- Integrity
- Team Work
- Quality
- Rules and Procedures
- Closeness

ORGANISATION CHART



MANAGER



MARÍA IGNACIA DÍAZ

General Manager

Business and administration (UGM),
Major in Economy

idiaz@grupointexa.cl



JUAN FRANCISCO SANGUINETI

Project Manager

Civil Construction (PUC)
MBA Executive
Master in People Management
(UNAB)

jfsanguinetti@grupointexa.cl

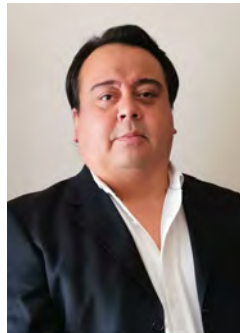


MARIO DÍAZ

Project Manager

Civil Construction (UTSM)
Diploma in Administration Strategic
Contracts (PUC)

mdiaz@grupointexa.cl



MAURICIO PÉREZ

Project Manager

Civil Construction (Instituto
Profesional Virgilio Gómez)

mperez@grupointexa.cl



KARLA NOVA

Engineering Manager

Construction
Manager (USACH)

knova@grupointexa.cl



JUAN PABLO MERELLO

Commercial Manager

Civil Construction (U. Central)
Master of sustainable development
(UNSW, Australia)

jpmerello@grupointexa.cl



MARCELO PÉREZ

**Planning, Control and Development
Manager**

Architect (U. Mayor)
Project Director PMI, Project
Management Institute Chile Chapter.

marceloperez@grupointexa.cl



PAULA UGARTE

People Manager

Psychologist (PUC)
Diploma in Strategic Human
Resources Management(UAI)

pugarte@grupointexa.cl

SUSTAINABLE DEVELOPMENT POLICY

SOCIAL CORPORATE RESPONSIBILITY

PROTECTING PEOPLE AND THE ENVIRONMENT

1

Our production is focused on the delivery of quality service based on people and the protection of the environment. Our first mission is to ensure the safety and well-being of the professionals that are part of INTEXA, where we use proven procedures regulated by ISO Quality and Safety Standards. Our second mission is to protect the environment, where we have a set of policies for internal use and to use in the construction projects of our clients.



PROMOTING ECONOMIC DEVELOPMENT

2

We contribute to improving market competitiveness through our procurement area, purchasing from and hiring the services of different suppliers, and through our human resources area, hiring national and foreign professionals, therefore stimulating long term economic development beyond the projects we work on.



EFFICIENT, ETHICAL, AND TRANSPARENT MANAGEMENT

3

We are committed to the highest standards of ethical business conduct in the world. This code of ethics is one of the most valuable assets of our company and a direct result of our employees' actions. It implies performing all commercial transactions in an adequate, just, impartial, and ethical manner, thus avoiding even the appearance of impropriety. We seek clients and partners who share our values and code of conduct.



RESPONSIBLE WITH THE COMMUNITY AND SOCIETY

4

INTEXA is committed to providing management services for construction projects that respect the needs of the surrounding communities. Likewise, as a company, we work with an inclusive and collaborative approach that respects cultures and values, promotes dialogue, and fosters mutual trust.



INTEGRATED MANAGEMENT SYSTEM



Our company seeks to achieve the highest level of satisfaction for our clients through our vast empirical knowledge of matters related to construction projects, and with the experience of our professionals, technologies and our integrated system, fulfilling needs and requirements thoroughly despite challenges, in accordance to the foundations provided by the following norms: ISO 9001:2015, ISO 14001:2004 and ISO 45001:2018.

Our certification ISO 9001:2015, shows the following a quality management services process

- Project Management
- Project Coordination
- BIM
- Energy efficiency
- Bidding
- Technical and Administrative Construction Inspection
- Specialties Inspection.

The Integrated Management System policy in addition to our professionals' experience, allow us to fulfill the requirements and needs required

Our integrated management system objectives:

- Fulfilling and improving our service processes.
- Delivering added valued through our human capital.
- Satisfaction to our clients.
- Reducing energy, paper and water consumption generated by INTExA.
- Prevention of work-related injuries and illnesses based on INTExA's internal risk reduction.
- Fulfilling legal requirements and other obligations.



NETWORKS AND ASSOCIATIONS



Our company has a current inscription in different registries of administration platforms of suppliers, contractors and consultants. In these portals and / or associations, suppliers are identified, qualified, evaluated and monitored, in order to have reliable information and generate trust relationships, contributing to the strengthening of the productive chains of the industry.

For the above, at Intexa we have provided information about our company, which has been evaluated and successfully assessed.

It should be noted that we are also part of the public registries and portals that are under current law N°19.862 and its regulations that require the creation of institutional records for all public services and institutions and municipalities that make funds transfers. With all of the above, at Intexa we aim to increase our visibility and, thus, become a relevant supplier of the main organizations in Chile and the world.

SUPPLIERS

- CCHC, Chilean Contruction Chamber
- MINVU, Ministerio de Vivienda y Urbanismo.
- Chile Compra Mercado Público, La Plataforma de Licitaciones del Estado.
- MOP, Ministerio de Obras Públicas.
- Enami, Empresa Nacional de Minería.
- Aguas Andinas.
- Aguas Antofagasta.
- Asmar.
- Codelco.
- AQMarket.
- Banco Central.
- Ariba.
- Wherex.

A full-page background image of a warehouse aisle. A worker wearing a white hard hat, an orange safety vest with 'Antexa' on it, and dark pants is standing on the left, looking up at the high industrial shelving units. The shelves are filled with numerous boxes, some wrapped in clear plastic. The aisle is long and brightly lit by overhead lights.

OUR SERVICES

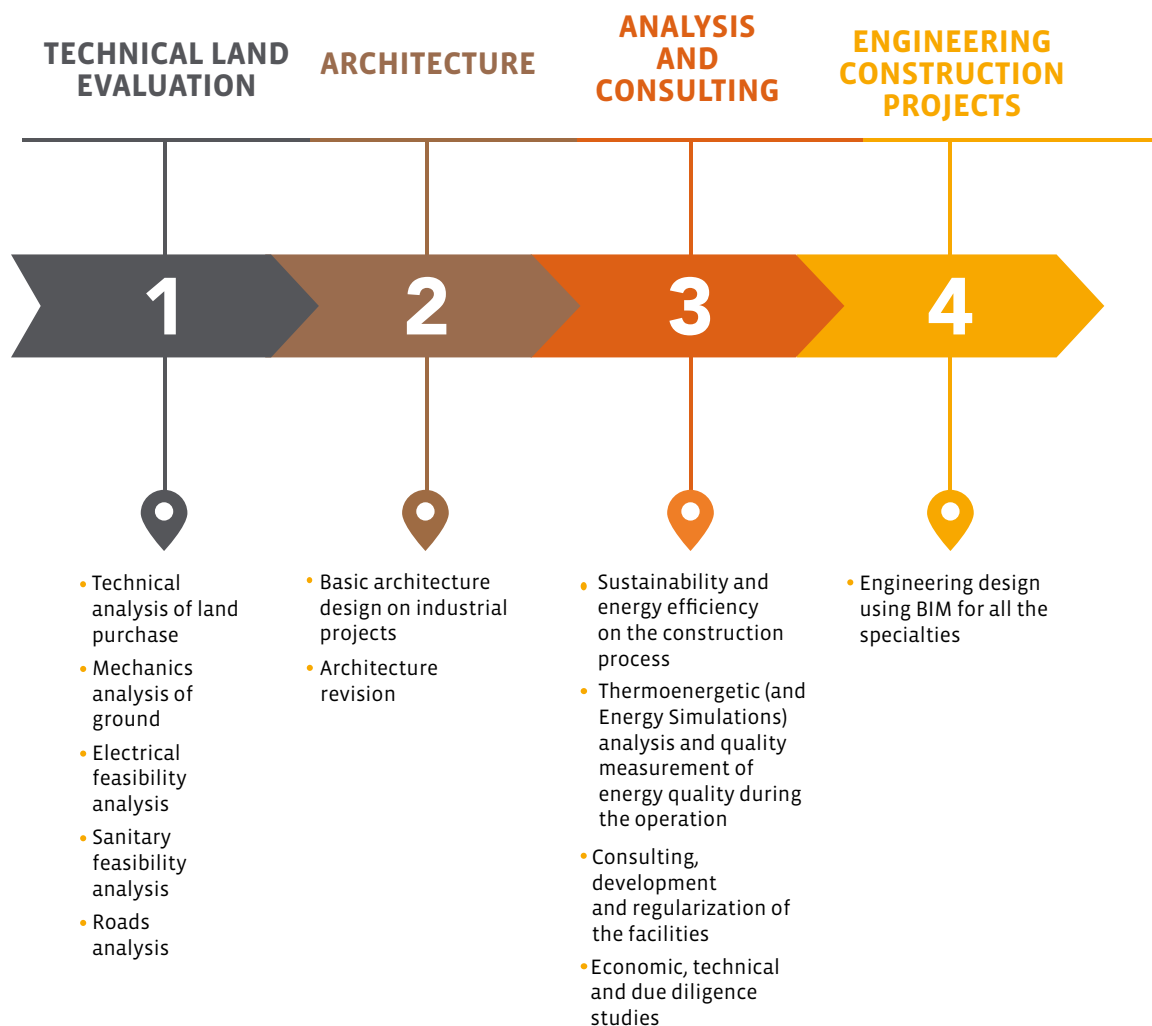
The objective of our services is to advice, support and deliver comprehensive solutions for project construction issues that exist in the project, from the conception of the idea, to its construction and commissioning.

Our goal is for the client to find a reliable, comprehensive and efficient solution throughout the construction process.

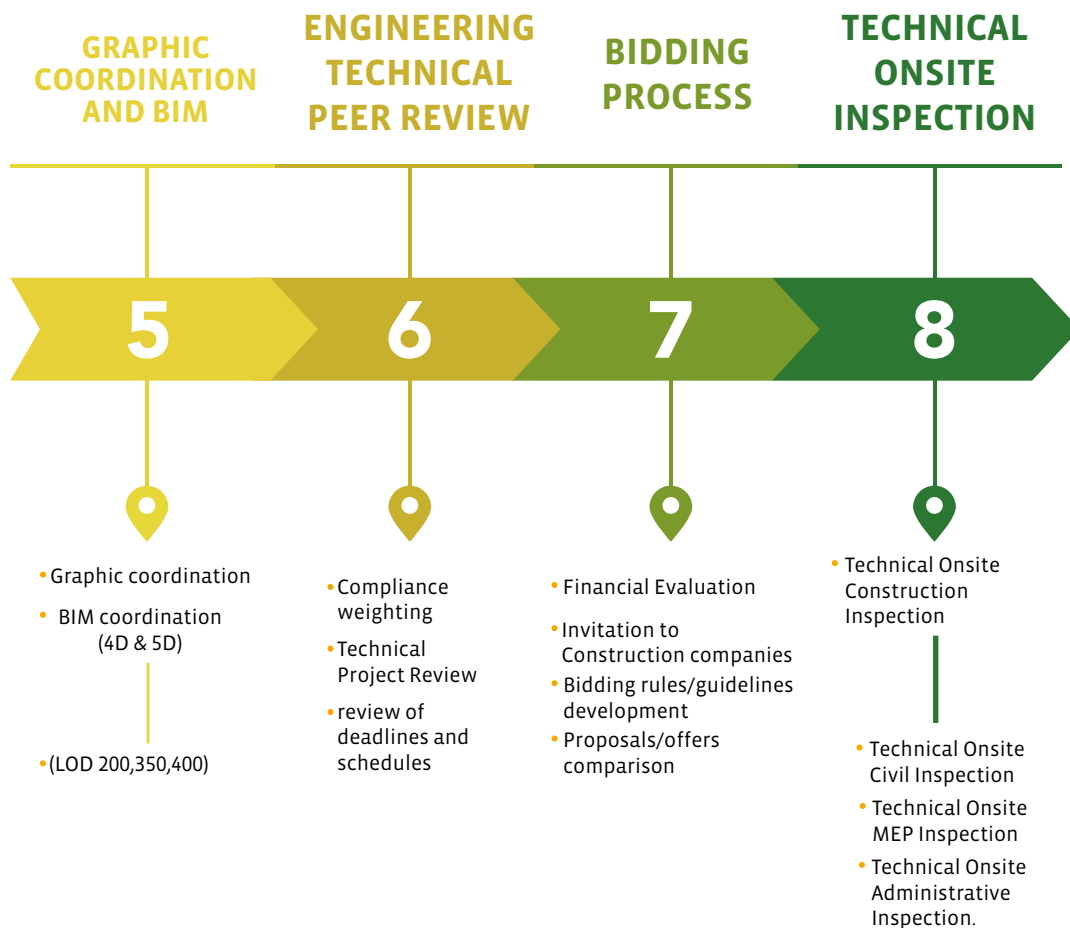
OUR SERVICES



PROJECT MANAGEMENT



OUR SERVICES



OUR SERVICES



I. PROJECT MANAGEMENT

Project management aims at supporting the project owner / manager in the complete conception and development of a construction project. The goal of our service is to optimize variables such as deadlines, cost, quality, safety, and construction system.

It can cover from its early beginning (technical analysis of the terrain and / or conceptual design), going through all its stages: feasibility studies, design (going through engineering, asset acquisition and architecture / structural analysis), technical and graphic coordination of MEP in 2D and 3D BIM, bidding (wherein a number of construction companies are awarded the project, according to the type of building to be built), technical and administrative site inspection construction (to look after the proper execution of the project), and after-sales service once the building is operative. This service can also be considered at a determined development stage or focus on one in particular.

The following aspects are generally considered:

- General management, with Last Planner methodology
- Planning
- Coordination
- Monitoring
- Control
- Acceptance
- Last Planner

LAST PLANNER

Through the implementation is the Last Planner Methodology, we can optimize the construction process of a project, which conceive as a productive process. Last Planner is a methodology born from the philosophy of Lean Construction, or construction without the “fat”, whose objective is to eliminate activities that do not add value to the production chain of a construction project. For the implementation of this methodology in a project, we work in collaboration with the designated construction company, ensuring that all parties involved in the project are aligned in terms of deadlines, quality, safety, and budget.

II. CONSTRUCTION MANAGEMENT

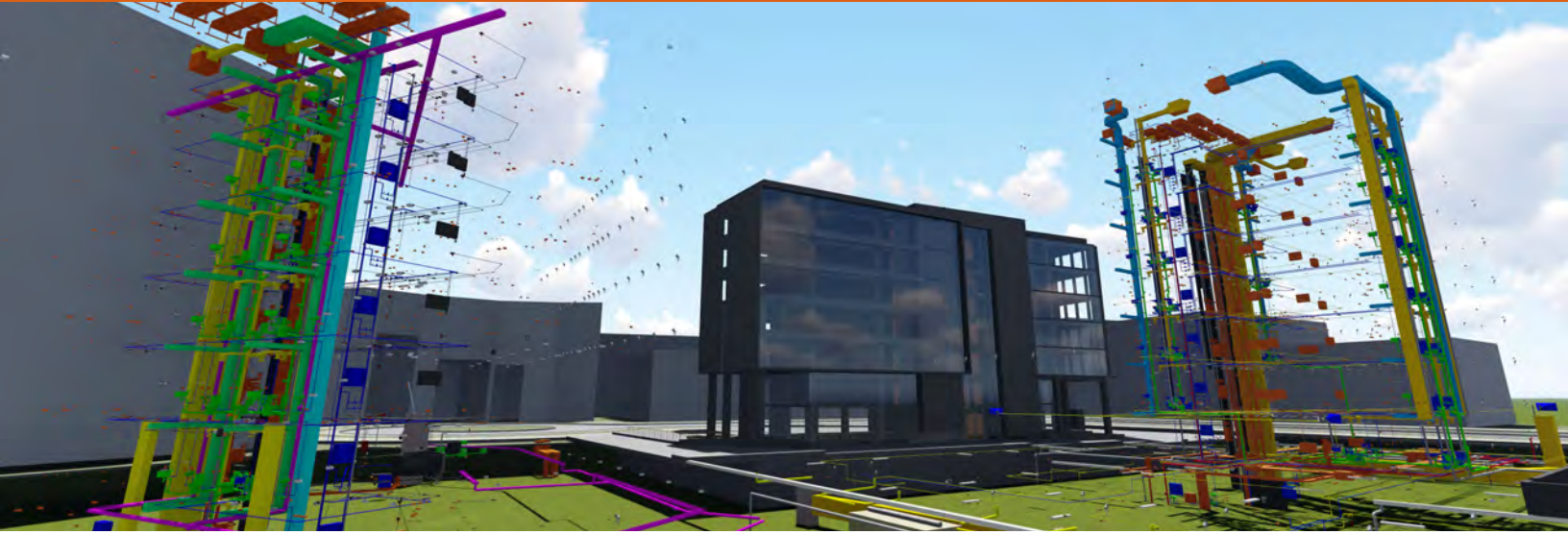
1. CONTRACT MANAGEMENT

This service is developed to optimize construction project costs, in which the consultant supplies a suitable team of professionals for the administration of each contract necessary to complete a construction project (including Batch Contract Management, Delegated Management, and Lump Sum). This is done through a multi-disciplinary management team to ensure the best costs, deadlines, and quality. The use of the Last Planner methodology, in addition to BIM, before and during the process of the project is vital for the success of this service.

2. OFF-SITE INSPECTION

Our professionals have the necessary experience and capacity to inspect production facilities off-site locations, like the quality of supplies such as electrical power switch board, workshop structures, among others.

OUR SERVICES



3. COMMISSIONING

Once the project is finished, our team can train the professionals who will remain in charge of the operation of the building, reviewing the facilities and due documents that support the project and the operation of the building.

III. LAND ACQUISITION CONSULTING

Our land acquisition consulting begins with the technical evaluation of the land being considered for the project before its purchase, with the goal of delivering a comparative value in relation to soil mechanics, rainwater feasibility, sanitation and utilities feasibility, community and regional regulations, connectivity, and road impact, among others.

IV. ENGINEERING PROJECTS

Engineering Project focuses on the development and design of engineering projects, encompassing most of the specialties required in a project.

- Mining Industry Services
- Electric Projects
- Lighting Projects
- Wireless and Wireline Projects
- Security Projects
- Alarm Projects
- Closed Circuit Television (CCTV) Projects
- Pumping Engineering
- Gas Projects
- Heat, Ventilation and Air Conditioning (HVAC) Projects
- Fire Protection Engineering (FPE)
- Structural Engineering Projects
- Waste Management Projects
- Earthworks and Levelling
- Pavement Engineering
- Transport Studies

V. MINING INDUSTRY SERVICES

We have strengthened our know-how and our accumulated experience in those services in which we add value, mainly, structures needed to support mining projects, such as offices, work camps, roads, workshops, and warehouses. Our team of professionals know the standards, urgency, and requirements of the mining client, and are devoted to reviewing, improving, designing, and inspecting works, as well as managing the necessary permits with the appropriate authorities.

Among these services, our experience stands out in the following:

- 1. Engineering development:** (including plumbing engineering, electric, HVAC, fire safety and earthwork, among others).
- 2. Facility consulting and standardization:** (technical support in permit management through a revision of engineering already developed).
- 3. Technical site inspection of works:** (for the correct execution of mitigating works, measurement approvals, nonconformities, and substandard conditions).

VI. CONSTRUCTION CONSULTING

We have a **technical office department**, composed by a multi-disciplinary group that are in charge of study the new trends and technology of the construction market. Moreover, is responsible in review, collect and analyze the experience of our company and our pressionalns in different buildings we have been part of.

We offer consulting services in different construction areas, according to our know-how in relation to environmental, risk prevention, economic, efficiency, and energy sustainability issues, among others.

OUR SERVICES



1.1. ECONOMIC CONSULTING AND STUDIES

1.1. DUE DILIGENCE

We prepare studies and analysis pursuant to the requirements of the client in terms of structural facilities, legal aspects, project feasibility, or land issues, among others. This is known as Due Diligence.

1.2. ECONOMIC STUDIES (CAPEX)

In Capital Expenditure (CAPEX), we assess a project according to current market prices, so that our clients can have a comparison parameter of the project. In this way, the final CAPEX of the construction project can be controlled during the management of the project.

2. TECHNICAL-LEGAL CONSULTING

2.1. SURVEY

Considers arbitration and preparation for legal actions, legal and construction technical studies, and damage and loss assessment reports for catastrophic events.

2.2. POST-DISASTER INSUREANCE MANAGEMENT

Contemplates structural erection of the facilities, valuation of restoration projects, commissioning deadlines, and valued background file to be presented to insurance companies.

2.3. FACILITY DEVELOPMENT AND REGULARIZATION CONSULTING

- Compliance of Applicable Standards
- Waste Management Plan
- Environmental Plan Regularization
- Safety Plan Consulting and Development

- Regularization of Facilities in Most Efficient Production Areas
- Regularization with Green Regulation
- Conditions of Project Delivery
- Regularization of Received Surface versus Real Surface.

3. ENVIRONMENTAL CONSULTING

SUSTAINABILITY AND ENERGY EFFICIENCY

We develop project management that boost efficient use of natural resources within their construction and operation. We counsel and assist clients who wish to know the cost of their investment and their payback in using environmentally friendly new technologies, with technical and economic analysis.

Through our software, we can offer the following services:

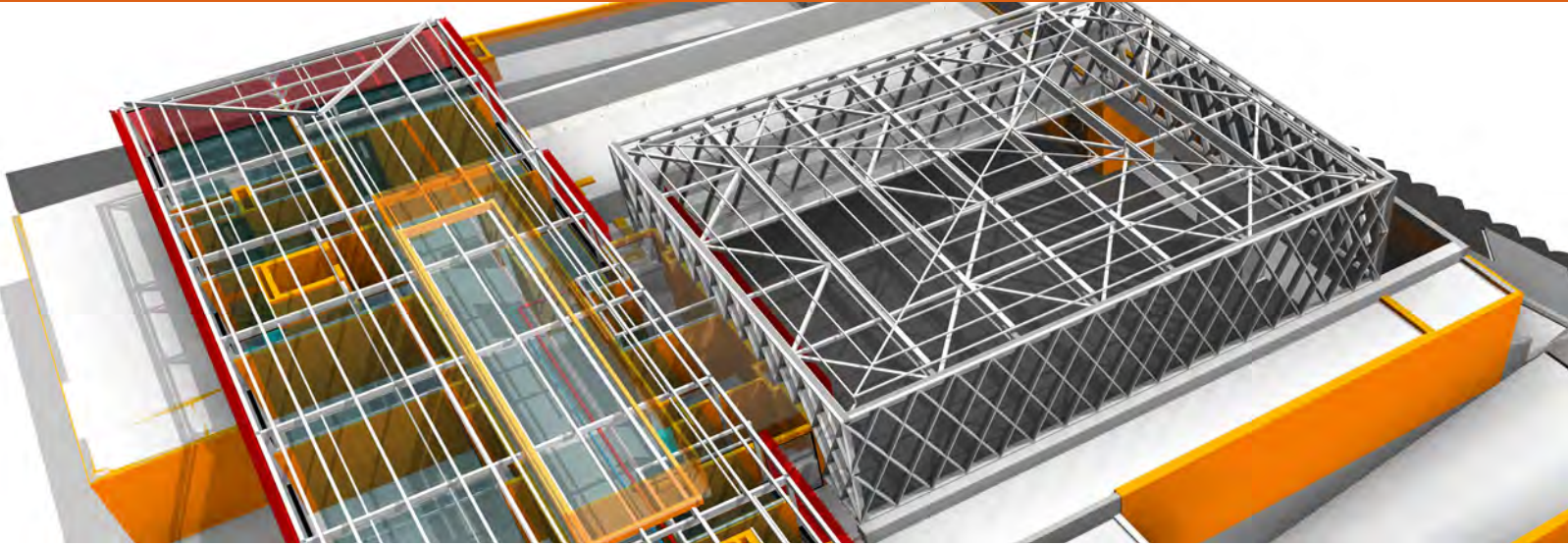
3.1. THERMO-ENERGETIC ANALYSIS AND ENERGY MEASUREMENT

We perform efficiency studies on the energy used during operation to measure electricity use and help clients reduce its consumption as an investment way. It considers measuring the facilities' electric parameters and analyzing their behavior throughout time, with the goal of achieving normal functioning related to voltage levels variations, interruptions, harmonics pollution indexes, flickers, potency factor, and negative sequence components, among others.

3.2. ENERGY EFFICIENCY PROJECTS

We perform an analysis of building design engineering for building projects, aiming to optimize their energy consumption. This is achieved through a comprehensive vision of the whole project, considering also the operation of the premise if the client so requires. In this way, the project can be studied considering

OUR SERVICES



the synergy among all the variables that have an impact on the final project.

3.3. ENERGY EFFICIENCY AUDITS

For existing buildings, we collect information about the characteristics of the premises and the facilities, as well as the operation's conditions. During this stage, we look for improvement opportunities, which we evaluate by using energy models, energy simulations and economic evaluations.

3.4 LEED CERTIFICATION COMMISSIONING

We support the client by performing the Commissioning for LEED Certification and reviewing the building design engineering projects related to the certification. We also supervise that everything reported and informed to the Green Building Council Institute (the only certifying institution in the United States) is actually installed and built, as well as performing a technical revision of the operation of the related equipment during the building's trial period.

VII. COORDINATION AND REVIEW OF CONSTRUCTION PROJECTS

TECHNICAL COORDINATION OF THE PROJECT

In the technical coordination of the project, we consider administrative and technical projects, including: the comprehensive review of the project, the quote, negotiation and awarding of the planners who will participate in the project, plan review and architectural and specialty technical specifications, among others.

GRAPHIC COORDINATION

Our goal is the planimetric review of the projects with the mission of improving its operability, detecting and reviewing inconsistencies, omissions and discrepancies for the optimal communication and interrelation between specialties. For this we use the Autodesk Revit™ / Architectural Software Autodesk Revit™ / Mep (Mechanical, Electrical and Plumbing).

BUILDING INFORMATION MODELING (BIM)

We perform the graphic coordination of construction projects through digital BIM modelling, which allows us to visualize projects in 3D, incorporating all the elements and encompassing all the different specialties needed. It is ideal for the design of complex projects where coordination can be visualized in a concrete manner, thus helping to avoid interference, omissions, and errors.

Using this 3D model we also integrate project schedule (4D) and construction costs (5D), which allows us to visualize the impact in scheduling, and to plan correctly the execution and costs of each task and components of the project.

VIII. ENGINEERING TECHNICAL PEER REVIEW (BIDDING)

This service is patented by our company and has been developed as a response to the requirements of our clients, who need to know if they have all the background information before beginning the bidding and construction of a project. This is a fundamental process to achieve the highest control possible in technical and documentary information, in order to comply with the requirements of the project before the bidding call, thus minimizing construction problems once the works of the project begin.

OUR SERVICES



IX. BIDDING

Bidding of construction projects or civil projects consists in coordinating the bidding guidelines or background to be delivered to Construction Companies participating in the competition, such as: architectural plans, specialty plans, architecture and specialty technical specifications, etc. Graphic coordination of the projects is excluded.

X. TECHNICAL SITE INSPECTION OF WORKS

We classify the Technical Site Inspection of Works into two items: Civil and Administrative. Civil Inspection contemplates the quality certification of the work site during the construction, while the Administrative Inspection involves the management of administrative aspects of the construction contract. The inspection includes managing and programming work site meetings, managing work site progress in relation to the basic program given by the construction company, managing the execution plan of control tests and coordination of project modifications, delivering information to the client regarding deviations related to the original programs with corrective measures, monitoring and defining additional and extraordinary jobs, managing, reviewing and approving invoice payments to the construction company and municipal reception, etc.

The Technical Site Inspection Service includes the following aspects:

- Quality Control of the execution of the works according to strict compliance with Plans and Technical Specifications through Reception Protocols for each activity.

- Control of Work Progress in relation to the Base Program delivered by the Construction Company.
- Controls of Materials and Products arrived on site and made on site.
- Supervise the quality and progress of subcontracts.
- Evaluate and propose alternative solutions to technical problems that may occur on site.
- Control and coordination of projects modifications.
- Coordinate the work supervision of architects and engineers.
- Inform the client about the deviations that occur with respect to the original program, proposing the corrective measures to overcome this situation.
- Control of guarantees and insurances.
- Control and review of additional works and extraordinary works.
- Control, review and approval of payment statements to the construction company.
- Delivery to the Construction Company of the list of all the information that must be given to the owner for the Municipal Reception to take place.
- Address together with the owner at the reception of the work, be it Provisional or Final Reception.



PROMINENT PROJECTS

PROMINENT PROJECTS

INDUSTRIAL



PROJECT	Salcobrand Distribution Center
CLIENT	Salcobrand
CITY	Santiago
AREA	20.000 mt2
SERVICE	Project Management and Engineering
END DATE	2014-2016



PROJECT	New Offices, Warehouse and Quality Laboratory
CLIENT	Merck Chile S.A.
CITY	Santiago
AREA	12.000 mt2
SERVICE	Project Management
END DATE	2019 - 2020



PROJECT	Distribution Center El Peñón
CLIENT	Walmart Chile
CITY	Santiago
AREA	146.000 mt2
SERVICE	Project Management
END DATE	2014-2019



PROJECT	Process and Packing Plant
CLIENT	Sunsweet
CITY	Santa Cruz
AREA	9.700 mt2
SERVICE	Technical Onsite Construction Inspection
END DATE	2018-2020

PROMINENT PROJECTS

INDUSTRIAL



PROJECT	Data Center GTD
CLIENT	GTD TELSUR
CITY	Puerto Montt
AREA	2.300 mt2
SERVICE	Technical Onsite Construction Inspection
END DATE	2017-2018



PROJECT	EIT Distribution Center
CLIENT	EIT Logística
CITY	Pudahuel
AREA	22.000 mt2
SERVICE	Project Management
END DATE	2017-2018



PROJECT	Distribution Center KRCC Factory & EMS
CLIENT	Komatsu Cummins
CITY	Lo Boza
AREA	19.000 mt2
SERVICE	Technical Onsite Construction Inspection
END DATE	2016-2017



PROJECT	Distribution Center Logicentro Miraflores
CLIENT	Inmobiliaria Fortaleza
CITY	Santiago
AREA	32.000 mt2
SERVICE	Technical Onsite Construction Inspection
END DATE	2013-2016

PROMINENT PROJECTS

INDUSTRIAL



PROJECT	Logistics center Altos de Lampa
CLIENT	Kaufmann
CITY	Lampa
AREA	37.838 mt2
SERVICE	Technical Onsite Construction Inspection
END DATE	2016



PROJECT	Distribution Center Noviciado
CLIENT	Ecolock
CITY	Noviciado
AREA	28.177 mt2
SERVICE	Management proj. and after-sales service
END DATE	2016



PROJECT	LTS Distribution Center and Civil Works
CLIENT	Walmart Chile
CITY	Quilicura
AREA	25.335 mt2
SERVICE	Technical Onsite Construction Inspection
END DATE	2013-2018



PROJECT	Distribution Center Logicentro Miraflores
CLIENT	Inmobiliaria Fortaleza
CITY	Renca, Santiago
AREA	32.120 mt2
SERVICE	Management Project
END DATE	2014

PROMINENT PROJECTS

INDUSTRIAL



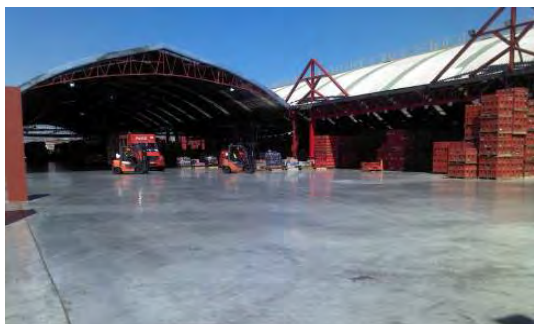
PROJECT	Distribution Center, cellar y workshop
CLIENT	Cummins
CITY	Concepción
AREA	2.346 mt2
SERVICE	Bidding process and Tech. Onsite Const. Insp.
END DATE	2015



PROJECT	Distribution Center Guacolda
CLIENT	DHL
CITY	Quilicura, Santiago
AREA	8.000 mt2
SERVICE	Industrial Architecture
END DATE	2014



PROJECT	Distribution Center Lo Aguirre
CLIENT	Walmart Chile
CITY	Santiago
AREA	71.000 mt2
SERVICE	Management Project
END DATE	2013



PROJECT	Planta Carlos Valdovinos
CLIENT	Andina
CITY	Santiago
AREA	19.000 mt2
SERVICE	Specialties Proj., Bidding and Tech. Onsite Const. Insp.
END DATE	2013

PROMINENT PROJECTS

COMMERCIAL



PROJECT	Proyecto Territoria Apoquindo
CLIENT	Territoria
CITY	Las Condes
AREA	154.000 mt2
SERVICE	Technical Onsite Construction Inspection and engineering
END DATE	2017-2020



PROJECT	Centro Comercial
CLIENT	Valcan
CITY	Quilicura
AREA	119.000 mt2
SERVICE	Management Project
END DATE	2017-2021



PROJECT	Mall Open Plaza
CLIENT	Rentas Falabella
CITY	La Calera
AREA	25.935 mt2
SERVICE	Technical Onsite Construction Inspection
END DATE	2015-2018



PROJECT	Mall Open Plaza Fontova
CLIENT	Rentas Falabella
CITY	Huechuraba
AREA	9.642 mt2
SERVICE	Technical Onsite Construction Inspection
END DATE	2016 - 2017

PROMINENT PROJECTS

COMMERCIAL



PROJECT	Mall Plaza Vespucio (Remodelación)
CLIENT	Mall Plaza
CITY	Santiago
AREA	42.696 mt2
SERVICE	Technical Onsite Construction Inspection
END DATE	2016-2017



PROJECT	Centro Comercial Open Plaza El Bosque
CLIENT	Rentas Falabella
CITY	Santiago
AREA	17.000 mt2
SERVICE	Management Project
END DATE	2013



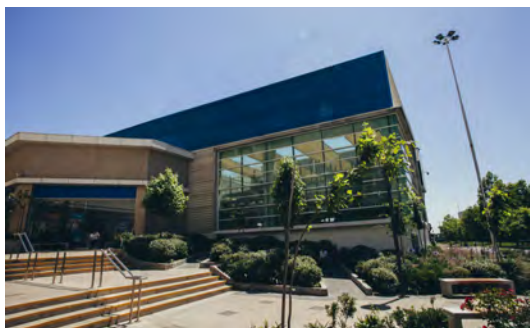
PROJECT	Distrito de Lujo
CLIENT	Parque Arauco
CITY	Santiago
AREA	13.600 mt2
SERVICE	Management Project
END DATE	2013



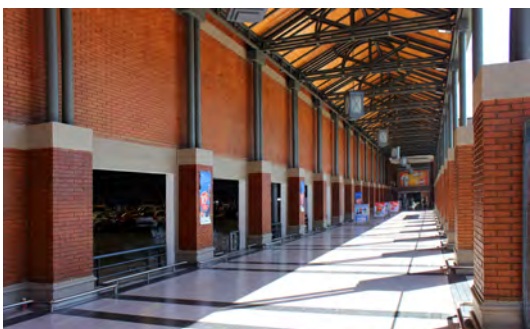
PROJECT	Strip Center Peñalolén
CLIENT	IFB Inversiones
CITY	Santiago
AREA	2.757 mt2
SERVICE	Due Diligence
END DATE	2013

PROMINENT PROJECTS

COMMERCIAL



PROJECT	Homecenter Sodimac Mall Tobalaba
CLIENT	Sodimac
CITY	Santiago
AREA	14.200 mt2
SERVICE	Management Project
END DATE	2012



PROJECT	Remodelación Hiper Lider Puente Nuevo
CLIENT	Walmart Chile
CITY	Santiago
AREA	13.500 mt2
SERVICE	Technical Onsite Construction Inspection
END DATE	2012



PROJECT	Supermercado Tottus Vitacura
CLIENT	Rentas Falabella
CITY	Santiago
AREA	3.000 mt2
SERVICE	Revit Coord., Bidding and Tech. Onsite Const. Insp.
END DATE	2012



PROJECT	Strip Center Consistorial Peñalolén
CLIENT	Inmobiliaria Patio
CITY	Santiago
AREA	7.485 mt2
SERVICE	Bidding, Coord. and Tech. Onsite Const. Insp.
END DATE	2011

PROMINENT PROJECTS

EDUCATIONAL INSTITUTIONS



PROJECT	Edificio Ingeniería Etapa 1
CLIENT	U. de Los Andes
CITY	Las Condes
AREA	3.650 mt2
SERVICE	Technical Onsite Construction Inspection
END DATE	2018



PROJECT	Centro de Innovación UC
CLIENT	Aguas Andinas S.A
CITY	Santiago
AREA	75 mts 2
SERVICE	Technical Onsite Construction Inspection
END DATE	2017



PROJECT	Edificio Administración Central
CLIENT	Universidad de los Andes
CITY	Las Condes, Santiago
AREA	17.766 m2
SERVICE	Management Project
END DATE	2015



PROJECT	Campus Providencia
CLIENT	Universidad Autónoma de Chile
CITY	Providencia, Santiago
AREA	33.000 m2
SERVICE	Management Project
END DATE	2015

PROMINENT PROJECTS

EDUCATIONAL INSTITUTIONS



PROJECT	Colegio San Marcos
CLIENT	Invers. Inmobiliarias La Portada
CITY	Antofagasta
AREA	3.526 m2
SERVICE	Technical Onsite Construction Inspection
END DATE	2015



PROJECT	Laboratorio Ingeniería en Minas
CLIENT	Universidad Técnica Federico Santa María
CITY	San Joaquín, Santiago
AREA	-
SERVICE	Climate Project
END DATE	2014



PROJECT	Edificio Servicios Generales
CLIENT	Universidad Técnica Federico Santa María
CITY	San Joaquín, Santiago
AREA	16.046 m2
SERVICE	Technical Onsite Construction Inspection
END DATE	2014



PROJECT	Colegio Nido de Aguilas
CLIENT	Constructora Larraín Prieto
CITY	Santiago
AREA	-
SERVICE	Electrical Onsite Construction Inspection
END DATE	2011

PROMINENT PROJECTS

OFFICE



PROJECT	Mod. Caja y Baño Ley de Sucursales 20.422
CLIENT	Los Heroes CCAF
CITY	Chile
AREA	931 mt2
SERVICE	Management Project
END DATE	2018-2019



PROJECT	Edificio oficinas
CLIENT	Inmobiliaria Patio
CITY	Puerto Montt
AREA	400 mt2
SERVICE	Management Project
END DATE	2017



PROJECT	Edificio Corporativo Socofar/ 5to Piso
CLIENT	Socofar
CITY	Huechuraba
AREA	1000 mt2
SERVICE	Technical Onsite Construction Inspection
END DATE	2017-2018



PROJECT	Edificio Corporativo Piso 3 y 10
CLIENT	Aguas Andinas S.A.
CITY	Santiago
AREA	2.600 mt2
SERVICE	Technical Onsite Construction Inspection
END DATE	2016

PROMINENT PROJECTS

OFFICE



PROJECT	Banco Falabella Vitacura
CLIENT	Rentas Falabella
CITY	Santiago
AREA	80 mt2
SERVICE	Technical Onsite Construction Inspection
END DATE	2014



PROJECT	Edificio City Park Huechuraba
CLIENT	Inversiones Urbanas
CITY	Santiago
AREA	16.738 mt2
SERVICE	BIM, Coordination and Technical Inspection
END DATE	2013



PROJECT	Edificio Magnus II
CLIENT	Inmobiliaria Santafe S.A
CITY	Santiago
AREA	11.021 mt2
SERVICE	Electrical Project and Technical Inspection
END DATE	2011



PROJECT	Edificio Neruda
CLIENT	Inmobiliaria Santafe S.A
CITY	Santiago
AREA	7.603 mt2
SERVICE	Electrical Project and Technical Inspection
END DATE	2011

PROMINENT PROJECTS

RESIDENTIAL AND URBAN PLANNING



PROJECT	Edificio Neus
CLIENT	Inmobiliaria Aconcagua
CITY	Ñuñoa
AREA	21.037 mt2
SERVICE	Technical Onsite Construction Inspection
END DATE	2018-2019



PROJECT	Edificios El Peral Etapa 1
CLIENT	Inmobiliaria FG
CITY	Santiago
AREA	31.801 mt2
SERVICE	Technical Onsite Construction Inspection
END DATE	2018-2019



PROJECT	Edificio Tempus
CLIENT	Inmobiliaria Aconcagua
CITY	San Miguel
AREA	2.500 mt2
SERVICE	Technical Onsite Construction Inspection
END DATE	2017-2018



PROJECT	Edificio Reñaca ON
CLIENT	Inmobiliaria Aconcagua
CITY	Reñaca
AREA	13.101 mt2
SERVICE	Technical Onsite Construction Inspection
END DATE	2016-2017

PROMINENT PROJECTS

RESIDENTIAL AND URBAN PLANNING



PROJECT	Edificio Exequiel Fernandez
CLIENT	Inmobiliaria Loga
CITY	Ñuñoa
AREA	3.545 mt2
SERVICE	Tech. Onsite Const. Insp. and after- sales serv. management
END DATE	2016



PROJECT	Edificio Costa Laguna
CLIENT	Inmobiliaria Aconcagua
CITY	Antofagasta
AREA	16.071 mt2
SERVICE	Technical Onsite Construction Inspection
END DATE	2013



PROJECT	Edificio Cóndor
CLIENT	Inmobiliaria Aconcagua
CITY	Santiago
AREA	16.500 mt2
SERVICE	Technical Site Inspection
END DATE	2017



PROJECT	Edificio Playa Llacolén
CLIENT	Inmobiliaria Loga
CITY	Antofagasta
AREA	17.046 mt2
SERVICE	Technical Site Inspection
END DATE	2016

PROMINENT PROJECTS

RESIDENTIAL AND URBAN PLANNING



PROJECT	Edificio Bahía Valparaíso
CLIENT	Inmobiliaria IV Centenario
CITY	Valparaíso
AREA	20.812 mt2
SERVICE	Coordinación BIM e Inspección Técnica
END DATE	2016



PROJECT	Condominio Casas K4
CLIENT	Inmobiliaria Aconcagua
CITY	Antofagasta
AREA	7.474 mt2
SERVICE	Technical Site Inspection
END DATE	2016



PROJECT	Condominio Casas Valle Del Mar Et. VIII
CLIENT	DICSA
CITY	Antofagasta
AREA	7.897 mt2
SERVICE	Technical Site Inspection
END DATE	2015



PROJECT	Edificio Brisas de Costa Laguna
CLIENT	Inmobiliaria Aconcagua
CITY	Antofagasta
AREA	16.071 mt2
SERVICE	Technical Site Inspection
END DATE	2015

PROMINENT PROJECTS

RESIDENTIAL AND URBAN PLANNING



PROJECT	Condominio Casas Alto Sacramento Et. III
CLIENT	Sinergia
CITY	Buín
AREA	9.019 mt ²
SERVICE	Technical Site Inspection
END DATE	2015



PROJECT	Edificio Vista Santa María
CLIENT	Inmobiliaria Santafe S.A.
CITY	Santiago
AREA	14.096 mt ²
SERVICE	Technical Site Inspection
END DATE	2010



PROJECT	Condominio Casas Cruz De Lorena II
CLIENT	Inmobiliaria Casablanca
CITY	Quilpue
AREA	20.000 mt ²
SERVICE	Technical Site Inspection
END DATE	2006

PROMINENT PROJECTS

PUBLIC



PROJECT	Sucursales Correos de Chile
CLIENT	Correos de Chile
CITY	Varias Sucursales
AREA	21.190 mt2
SERVICE	Technical Site Inspection
END DATE	2017-2020



PROJECT	Archivo y Biblioteca Regional-Ex Cárcel
CLIENT	Forma Colectiva
CITY	Punta Arenas
AREA	-
SERVICE	Presupuesto
END DATE	2017-2018



PROJECT	Palacio Pereira
CLIENT	MOP
CITY	Santiago
AREA	5.240 mt2
SERVICE	Technical Site Inspection
END DATE	2016 – 2017



PROJECT	Tribunal Transitorio
CLIENT	Poder Judicial
CITY	Alto Hospicio
AREA	628 mt2
SERVICE	Inspección Técnica y Adm. de Obras
END DATE	2016

PROMINENT PROJECTS

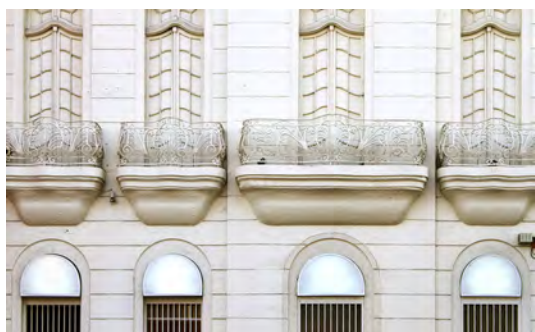
PUBLIC



PROJECT	Centro Cultural Lo Barnechea
CLIENT	Municipalidad de Lo Barnechea
CITY	Lo Barnechea, Santiago
AREA	1.458 mt2
SERVICE	Technical Site Inspection
END DATE	2015



PROJECT	Centro de Justicia La Serena
CLIENT	Corp. Administrativa del Poder Judicial
CITY	La Serena
AREA	11.000 mt2
SERVICE	Management
END DATE	2014



PROJECT	Sucursal Serviestado
CLIENT	Banco Estado
CITY	Recoleta
AREA	399 mt2
SERVICE	Management
END DATE	2012



PROJECT	Juzgado de Letras y Garantías Los Vilos
CLIENT	Corp. Administrativa del Poder Judicial
CITY	Los Vilos
AREA	998 mt2
SERVICE	Management
END DATE	2011

PROMINENT PROJECTS

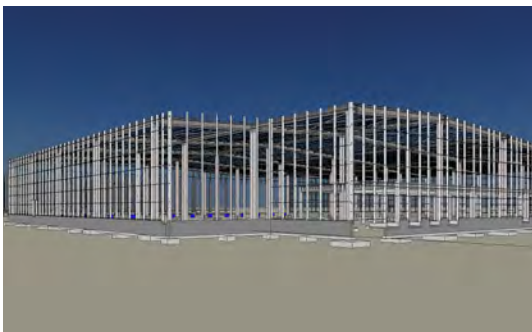
SPECIALTIES



PROJECT	Placa Comercial Territoria Apoquindo
CLIENT	Territoria
CITY	Las Condes
SERVICE	Especialidad Sanitario / Electrico / PCI / HVAC / BIM
END DATE	2017-2019



PROJECT	Condominio de Casas Vistamar (ex-San Marcos)
CLIENT	Nueva Urbe
CITY	Antofagasta
SERVICE	BIM coordination
END DATE	2018



PROJECT	Centro de Distribución Salcobrand
CLIENT	Salcobrand
CITY	Santiago
SERVICE	Management and Administration by lots
END DATE	2014-2016



PROJECT	Proyecto Nuevo CAM
CLIENT	Mutual de Seguridad
CITY	Providencia
SERVICE	Engineering technical peer review (Bidding)
END DATE	2017

PROMINENT PROJECTS

SPECIALTIES



PROJECT	Edificio Select Lyon
CLIENT	Inmobiliaria Santafe
CITY	Ñuñoa, Santiago
SERVICE	Specialty Project
END DATE	2014



PROJECT	Edificio Vista el Golf
CLIENT	Inmobiliaria Fortaleza
CITY	Marbella
SERVICE	Specialty Project
END DATE	2014



PROJECT	Juzgado de Familia
CLIENT	Poder Judicial
CITY	Yumbel
SERVICE	Diseño Arq. Sustentable e Ingeniería de especialidades
END DATE	2013



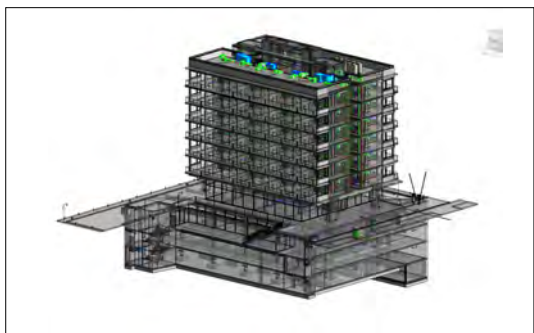
PROJECT	Bodegas Planta Renca
CLIENT	Contitech
CITY	Santiago
SERVICE	Eléctrico, Detección y Extinción de Incendios, Aguas Lluvias y Manejo de Residuos
END DATE	2013

PROMINENT PROJECTS

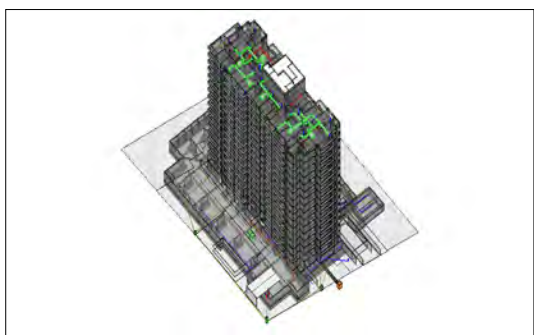
BIM COORDINATION



PROJECT	Edificio Wework Kennedy
CLIENT	Seggiaro Arquitectos
CITY	Santiago
SERVICE	BIM Coordination
END DATE	2018



PROJECT	Apart Hotel Sancho de la Oz
CLIENT	Igensa
CITY	Santiago
SERVICE	BIM Coordination
END DATE	2018



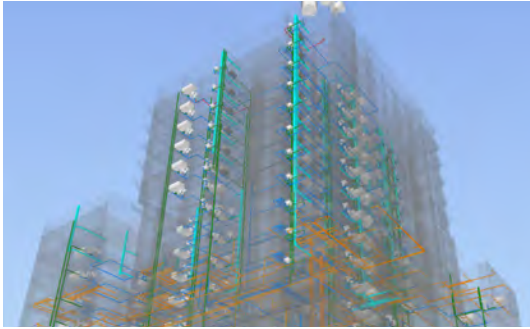
PROJECT	Edificio San Bernardo
CLIENT	Inmobiliaria FG
CITY	Santiago
SERVICE	BIM Coordination
END DATE	2018



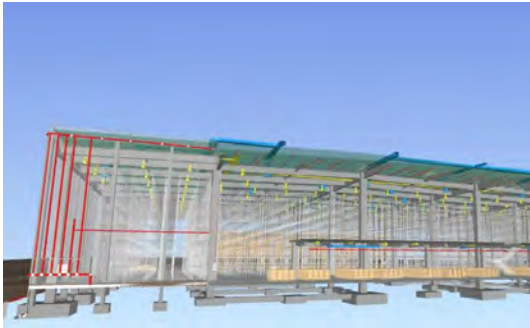
PROJECT	Edificios El Peral
CLIENT	Inmobiliaria FG
CITY	Santiago
SERVICE	BIM Coordination
END DATE	2018

PROMINENT PROJECTS

BIM COORDINATION



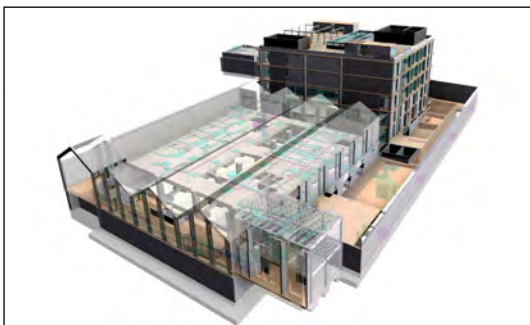
PROJECT	Edificio Caliche
CLIENT	DICSA
CITY	Santiago
SERVICE	BIM Coordination
END DATE	2016



PROJECT	Centro de Distribución Salcobrand
CLIENT	Salcobrand
CITY	San Bernardo
SERVICE	BIM Coordination
END DATE	2015



PROJECT	Open Plaza La Calera
CLIENT	Rentas Falabella
CITY	La Calera
SERVICE	2D, BIM. 4D, 5D Coordination
END DATE	2015



PROJECT	Centro de Justicia
CLIENT	Administración Corporativa Poder Judicial
CITY	La Serena
SERVICE	BIM Coordination
END DATE	2015

PROMINENT PROJECTS

TELECOMMUNICATIONS



PROJECT	Tienda WOM Mall Plaza el Trébol
CLIENT	WOM
CITY	Concepción
SERVICE	Technical Inspection
END DATE	2016



PROJECT	Sucursal Oficina
CLIENT	Entel
CITY	Antofagasta
SERVICE	Technical Inspection
END DATE	2014



PROJECT	Antenas NEXTEL / Auditoria de Calidad
CLIENT	Huawei
CITY	Cauquenes
SERVICE	Quality Audit Serv., Civil Works, Facilities and Telecom.
END DATE	2010



PROJECT	Antenas Telecom
CLIENT	CTR
CITY	Chiloé
SERVICE	Quality audit
END DATE	2010

CLIENTS

INDUSTRIAL

ADIDAS GROUP
ALISERV
ARCOR
ATACAMA YELLOW TAIL
AUTOMOTORES GILDEMEISTER
BIMBO
CAROZZI
CASTAÑO
CCU
CLEMSA
COLUN
CONTITECH
CUMMINS
DANCO
DEGASA
DHL
DOKA
ECOLOCK
EIT LOGISTICA
EMBOTELLADORA ANDINA
ESTEC
FINNING
IANSA
INVEROTERO
INVINSA
KAUFMANN
KOMATSU CUMMINS CHILE
MAERSK
MERCADO LIBRE
MERCK
MK
NATURAL RESPONSE
NESTLE
OPL
PAPELES CORDILLERA CMPC
PATAGONIA FRESH
RSM
SABINCO
SALCOBRAND
SITRANS
SUNSWEET

ENGINEERING CONSULTANTS

ASNN
GRUPO GESTIONA
INCOSA
JACOBS / SKM
PSC INGENIERIA

RETAIL

CARSOL FRUIT
CENCOSUD
CINEPOLIS
CONSTRUMART
CORPGROUP S.A. / SMU
DUFY
EASY
FALABELLA
FULL FRESH
H&M
IKEA
IMPERIAL
INSTORE
INTERCARRY
MALL BARRIO INDEPENDENCIA
MALL PLAZA
NATURA
OK MARKET
PAPA JOHNS
PARIS
PARQUE ARAUCO
PASMAR
PLAN
RIGHT WAY
SANDOVAL Y ASOCIADOS
SODIMAC
VIVOCORP
WALMART
SUPERMERCADOS ACUENTA
SUPERMERCADOS BIGGER
SUPERMERCADOS DEL SUR
SUPERMERCADOS EKONO
SUPERMERCADOS JUMBO
SUPERMERCADOS LIDER
SUPERMERCADOS SANTA ISABEL
SUPERMERCADOS TOTTUS
SUPERMERCADOS UNIMARC

ENERGY

ENEL
ENEX
IAL AMBIENTAL
INTEALSA

FINANCIAL / INVESTMENTS

A3 PROPERTY INVESTMENTS
BANCO CENTRAL
BANCO ESTADO
BANCO FALABELLA
BANCO ITAU
BICEVIDA
CELFIN
CONSORCIO
ECO CAPITAL
FONDO INDEPENDENCIA
INMATEC INVERSIONES
LARRAIN VIAL
LOS HEROES CAJA DE COMPENSACION
SARTOR
SERVI ESTADO
ZURICH CHILE

ARCHITECTS

3 ARQ
ALLIENDE GUARIDI RODRIGUEZ ARQ.
ARMAS Y ELTON ARQUITECTOS
ASL ARQUITECTOS
BEALS & LYON ARQUITECTOS
BL ARQUITECTOS
CHEB ARQUITECTOS
DUOTEMPUS ARQUITECTOS
FORMA COLECTIVA
FUENZALIDA SWINBURN
G5 ARQUITECTOS
LAYOUT ARQUITECTOS
LIRA Y TUCKERMANN
MAS FERNANDEZ ARQUITECTURA
MDF CONSULTORES
MJD ARQUITECTOS
ML ARQUITECTOS
PUGA ARQUITECTOS
SEGGIARO ARQUITECTOS
VANESSA SCHMITT

HEALTHCARE

ACHS
BUPA
MUTUAL DE SEGURIDAD

CLIENTS

RESIDENTIAL AND URBAN PLANNING INMOBILIARIO

3L CONSTRUCCION

BANMERCHANT

BULEVAR

BULLROCK

CBS DESARROLLO

COLLIERS

CONSTRUCTORA COCALAN

CONSTRUCTORA LARRAIN PRIETO

CONSTRUCTORA NADIC

CONSTRUCTORA SANTAFE

CONSTRUCTORA SUIZCORP

CONSTRUCTORA TECSA

CORPVIDA

CREDICORP CAPITAL

DESARROLLOS COMERCIALES

DIFAI

DIRECCION DE PRESUPUESTOS

DVC

ESPACIOS DES. INMOBILIARIOS

FERNANDEZ WOOD VIZCAYA

FPY EMPRESAS

GESTIÓN INMOBILIARIA PONIENTE

GREYSTAR

GRUPO COLOSO

HABITACOM

IANDES

IFB INVERSIONES

IGENSA

IM TRUST

INVERSIONES SANTA FIDELMIRA

INVERSIONES URBANAS

INVERTRUST

KUTULAS

MEDF

MONTALVA QUINDOS

RED PARTNERS

SENCORP

UNOGROUP

VALCAN

VALMAR

VANTRUST CAPITAL

VOLCAN

WEWORK

INMOBILIARIA ACONCAGUA

INMOBILIARIA ADISA

INMOBILIARIA ANDALIEN

INMOBILIARIA ANDO

INMOBILIARIA ARMAS

INMOBILIARIA AVELLANEDA

INMOBILIARIA BERSA

INMOBILIARIA BESALCO

INMOBILIARIA BOETSCH

INMOBILIARIA CASABLANCA

INMOBILIARIA CICLOS

INMOBILIARIA CIMENTA

INMOBILIARIA CIUDAD DEL NORTE

INMOBILIARIA COPAHUE

INMOBILIARIA DG4

INMOBILIARIA DESCUBRIMIENTO

INMOBILIARIA DICS

INMOBILIARIA EJE

INMOBILIARIA ENACO

INMOBILIARIA FG

INMOBILIARIA FORTALEZA

INMOBILIARIA FAI

INMOBILIARIA FPY

INMOBILIARIA FUNDAMENTA

INMOBILIARIA GALILEA

INMOBILIARIA GALIZZO S.A.

INMOBILIARIA GRUPO ARAUCANA

INMOBILIARIA GRUPO PUERTO

INMOBILIARIA HISPANO CHILENA

INMOBILIARIA HUB

INMOBILIARIA ICON

INMOBILIARIA ICUADRA

INMOBILIARIA IDEA

INMOBILIARIA IMSA ADPORTAS

INMOBILIARIA INSPIRA

INMOBILIARIA IV CENTENARIO

INMOBILIARIA LA RESERVA

INMOBILIARIA LICANRAY

INMOBILIARIA LOGA

INMOBILIARIA LOS CONQUISTADORES

INMOBILIARIA MNK

INMOBILIARIA NIALEM

INMOBILIARIA NOLLAGAM

INMOBILIARIA NUEVA COSTANERA

INMOBILIARIA NUEVA URBE

INMOBILIARIA PATIO

INMOBILIARIA PENINSULA PUCON

INMOBILIARIA PLAENGE

INMOBILIARIA POSH

INMOBILIARIA PY

INMOBILIARIA RILOP

INMOBILIARIA RISOL

INMOBILIARIA SAN NICOLAS

INMOBILIARIA SANTAFE

INMOBILIARIA SINERGIA

INMOBILIARIA SUCRE

INMOBILIARIA SURINVEST

INMOBILIARIA TERRITORIA

INMOBILIARIA ULTRATERRA

INMOBILIARIA VALLE ESCONDIDO

INMOBILIARIA VALPARAISO

INMOBILIARIA VERTICE

MINING

CODELCO

ANGLOAMERICAN

COMMUNITIES

B' NEI ISRAEL

INSTITUTO LIBERTAD Y DESARROLLO

TELECOMMUNICATIONS

CLARO

CTR TELEFONICA

ENTEL

ESTEC

GTD MANQUEHUE

GTD TELSUR

HUAWEI

INTERWINS

MOVISTAR

NETGLOBALIS

TELEFONICA

WOM

CLIENTS



EDUCATIONAL

AIHE INSTITUTO HEBREO
COLEGIO HERMANOS MARISTAS
COLEGIO SAINT JOSEPH
COLEGIO SAN MARCOS
JARDIN INFANTIL VITAMINA
PONTIFICIA UNIVERSIDAD CATOLICA
UNIVERSIDAD ANDRES BELLO
UNIVERSIDAD AUTONOMA
UNIVERSIDAD DE LOS ANDES
UNIVERSIDAD SAN SEBASTIAN
UNIVERSIDAD TARAPACA
UNIVERSIDAD TECNICA FEDERICO SANTA MARIA

PUBLIC

ADM. CORP. PODER JUDICIAL
CORDESAN
METRO PALMIRA
MINISTERIO DE ENERGIA
MINISTERIO DE OBRAS PUBLICAS
MOP / PALACIO PEREIRA
MUNICIPALIDAD DE LAS CONDES
MUNICIPALIDAD LO BARNECHEA

WATER TREATMENT

AGUAS ANDINAS
SUEZ
VIVALDA

OTHERS

CORREOS DE CHILE
CRUZ VERDE
DEPOCARGO
EPSA
ESRI
FIT CHILE
INTERVIAL
NUEVA PUDAHUEL
OFICENTRO
PAPELES CORDILLETRA CMPC
SOCOFAR
TERMINAL INTERNACIONAL IQUIQUE